

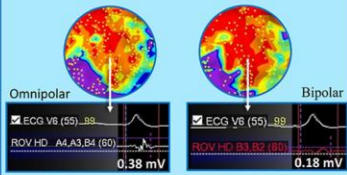
# OMNIPOLAR VERSUS BIPOLAR MAPPING TO GUIDE VENTRICULAR TACHYCARDIA ABLATION

## Mapping capacity

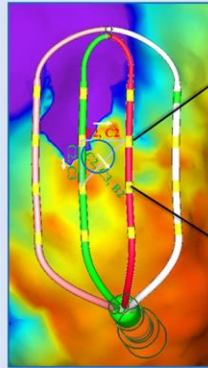
7.1% higher voltages for omnipolar.

Higher points density for omnipolar (13.8 vs 8.0 points/cm<sup>2</sup>).

Smaller scar areas for omnipolar.



24 patients



## OMNIPOLAR



## BIPOLAR



## Last deflection annotation

Less misannotated points for omnipolar (6.8% vs 21.9%).

Higher deceleration zones detection of the VT critical isthmus for omnipolar.

Higher late potentials specificity for omnipolar.

